

# Mounting Guidelines

## Table of Contents

Coin Test / Gap test	3
Magnet placement	4-7
Strips on Slide-up Windows	8
Strips on the Side	9
Mounting on Metal	10
Misalignment	11
Placement	12-13
Removal / Unmounting	14

## Coin/Gap Test

Strips can be mounted invisibly on almost any window and door depending on the space between the window/door and its frame. You'll need at least a 3 mm gap.

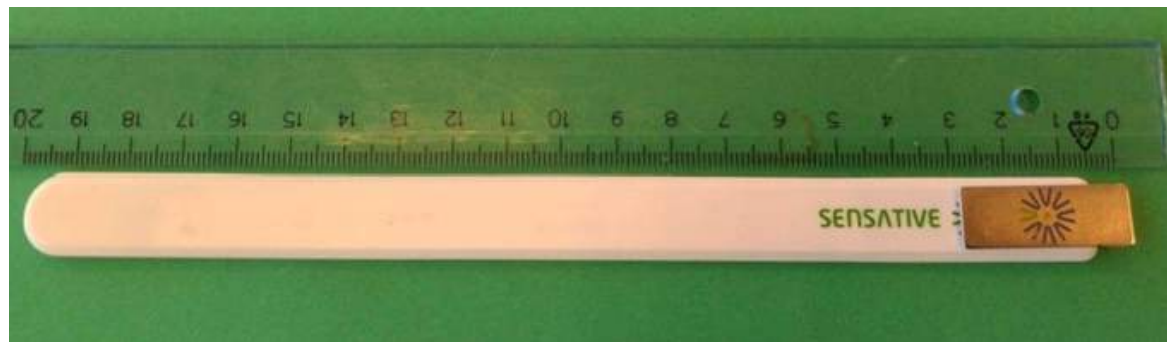
The “coin test” is a simple way to verify that there is enough space to fit Strips in your windows and doors. Here are some coins you can use to verify, in different currencies:

- USD: 2x 1 cent
- EUR: 2x 5 cent
- CAD: 2x 5 cent
- GBP: 2x 20 p
- NOK: 2x 1 kr
- DKK: 2x 1 kr
- SEK: 2x 1 kr

## Magnet Placement

At large gaps, more than 5 mm:

With the position where the magnet is sticking out of 2 to 10 mm at the end of the Strips, the benefit of the magnetic field is maximized and gaps up to 25 mm (1 inch) can be handled with correct detection of closed/open.

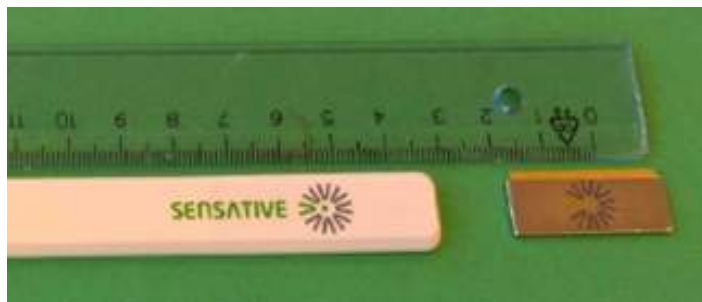


The end of green lines in the symbol visible but not the gray lines.

## Magnet Placement (2)



At narrow gaps, 3 to 5 mm

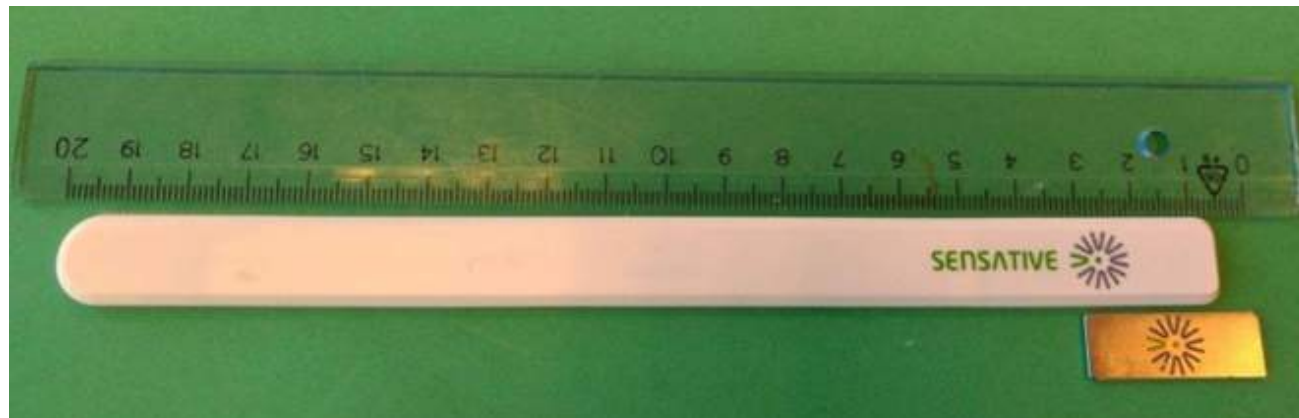


Magnet should not be placed more than 10 mm away from the edge of Strips, 3 to 5 mm is recommended.

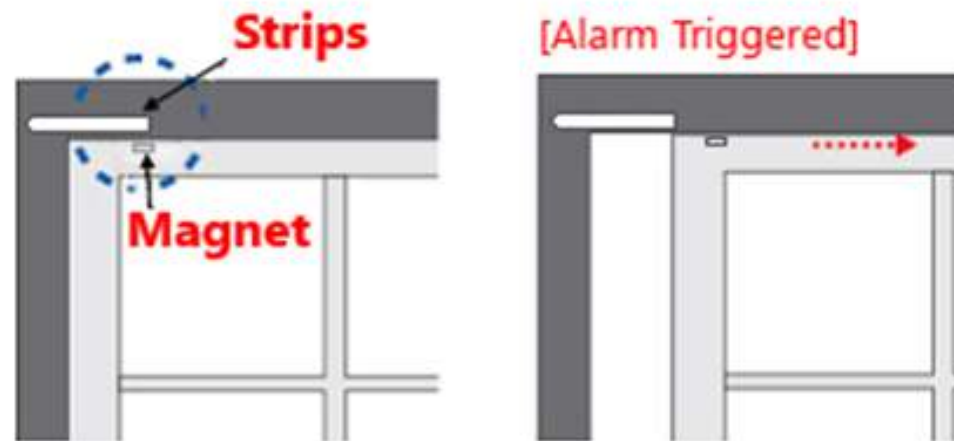
## Magnet Placement (3)

Side by side position:

Could be used at external mounting when there are no gaps available, ex. sliding doors.

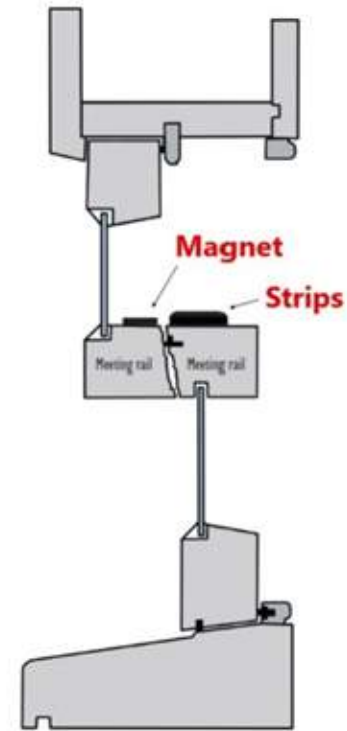


To maximize use of magnetic field the magnet should have a stick out of 2 to 10 mm from stick end.



At double door the strips and magnet is placed on the different door sides. For single door place Strips on frame and magnet on door side.

# Strips on Slide-up Windows





## Strips on the Side

If needed when the gap in-between window and frame is too narrow or a molding makes it impossible to mount Strips in the gap, strips and magnet could be mounted perpendicular.



## Mounting on Metal

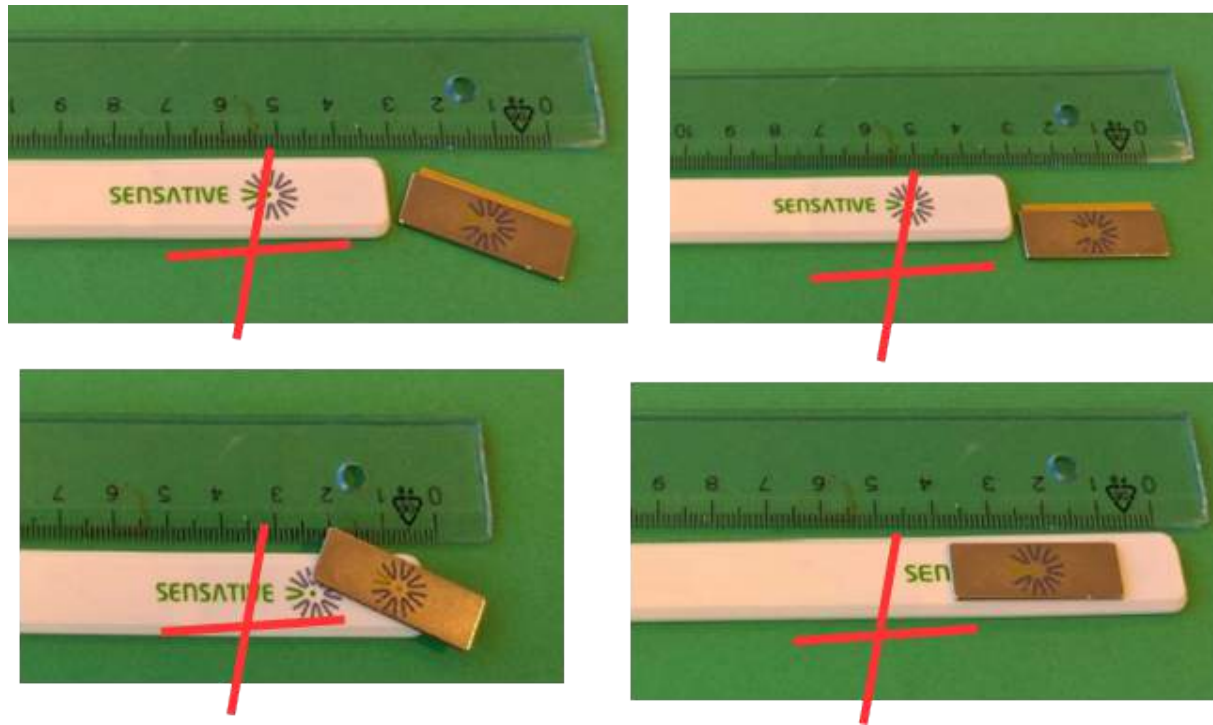
The surface should not be metal as any metal has an effect on the range of Strips.

The effect varies depending on the material that is used and especially if the metal is placed underneath the rounded side of the Strips (due to the antenna location).

In case the surface is metal, it may help to place: plastic, a wooden piece or a thicker adhesive (2-3 mm thick) in between both Strips and the metal door and between the magnet and the metal door.

# Misalignment

Make sure that there are no misalignment's between Strips and magnet. Avoid the following:





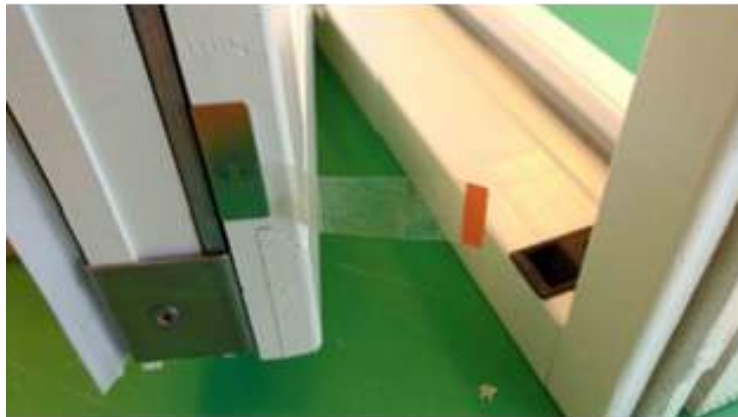
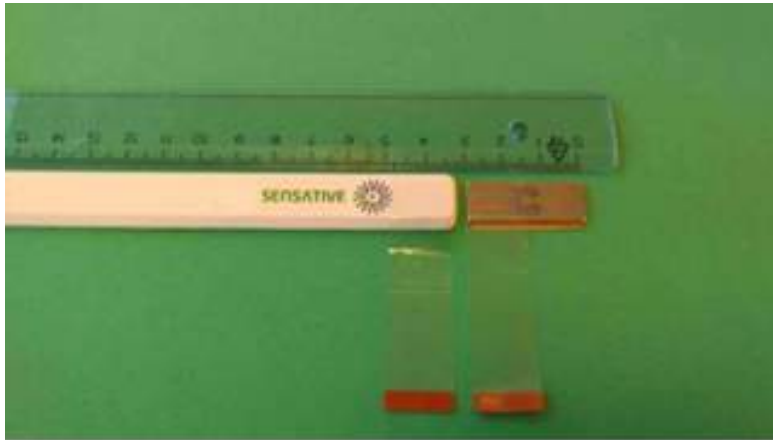
# Placement

If you find it difficult to align Strips and the magnet in the window or door, you may want to test to use the tape that came with Strips. Simply use the two tapes that held the magnets in place on Strips.

Follow these steps as you mount Strips and the magnet in the window or door:

- Start by placing the magnet and Strips next to each other, so that the red tapes are parallel or overlapping.
- Then, place Strips in a suitable place in the window/door, make sure the red tape is sticking out and is visible to you when you close the window or door.
- The next step is to mount the magnet on the opposite side of Strips, also make sure that the red tape is sticking out and is visible to you.
- Then you move the magnet until the two red tapes overlap or are parallel. Once that is done, you can remove the long protective film and mount Strips as well as the magnet.

## Placement (2)





# Removal / Unmounting

In case you need to unmount any glued Strips from any surface, please use “dental floss” or a thin wire that you can pull under the Strips so there is no risk that you damage the sensor or the window/door.

<https://sensativesupport.zendesk.com/hc/en-us/articles/360001729052-How-to-de-mount-Strips>

## Example of mounting on PVC Windows

All kind of PVC windows and doors has some kind of enforcement to provide stability. Often this is done with metal profiles. Attention to this has to be taken when mounting Strips so that the radio signal is not interfered by the metal frame.



Metal profiles

Normally Strips is mounted in the frame and the magnet on the window. For this example Strips is just above the metal profile and the radio signal is affected. If there is space, Strips could be placed on a piece of wood or plastic to lift it up a bit away from the metal.

## Example of mounting on PVC Windows (2)

Look for an alternative place for placing Strips away from the profiles, in the area toward the inside (red circle).

- Strips mounted on the window instead of the frame
- Strips mounted on the side

The magnet could be mounted on a spacer to both get closer to the Strips and also away from the metal profile.

